



# Capital Improvement Program High Schools

## Contents

High Schools Summary	11-7
High School (HS 14) Dulles North	11-8



## High Schools

Capital Improvement Program										
High School Projects										
Costs (\$ in 1000s)	Prior Years	FY 2023	FY 2024	FY 2025	FY 2026	FY 2027	FY 2028	6 Year Total	Future FYs	Project Total
High School (HS-14) Dulles North	-	-	21,755	249,245	-	-	-	271,000	-	271,000
<b>Total – Costs</b>	-	-	<b>21,755</b>	<b>249,245</b>	-	-	-	<b>271,000</b>	-	<b>271,000</b>
Funding Sources (\$ in 1000s)										
General Obligation Bonds	-	-	21,755	249,245	-	-	-	271,000	-	271,000
<b>Total – Funding Sources</b>	-	-	<b>21,755</b>	<b>249,245</b>	-	-	-	<b>271,000</b>	-	<b>271,000</b>



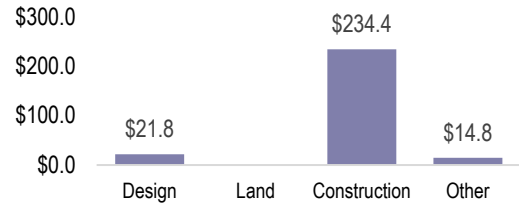
## High Schools

### High School (HS- 14) Dulles North

**Details:**

**Project Number:** n/a  
**Election District (2022):** Little River  
**Election District (2011):** Blue Ridge  
**Square Feet:** 330,000-345,000  
**LCPS Planning District:** Dulles North  
**Estimated Opening Year:** FY 2029  
**Referendum:** November 2023

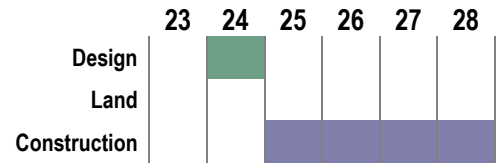
**Phase Costs in Millions**



**Background:**

The high school will be built using a multi-story design. The estimated 330,000-345,000 square foot building will serve students in grades nine through twelve. With an anticipated capacity of 2,100, the high school will include classrooms, cafeteria, auditorium, media center, gymnasium, an auxiliary gymnasium, outdoor physical education fields, and other associated spaces to support the high school program. The football and track stadium at the high school will hold 6,000 spectators to host State Championship meets and events.

**Project Phase Timeline by FY**



HS-14 is planned to be co-located with MS-14, a future elementary school (TBD), and other public uses on the Hartland site.

Costs (\$ in 1000s)	Prior Years	FY 2023	FY 2024	FY 2025	FY 2026	FY 2027	FY 2028	6 Year Total	Future FYs	Project Total
Professional Services	-	-	21,755	-	-	-	-	21,755	-	21,755
Construction	-	-	-	234,406	-	-	-	234,406	-	234,406
Furniture, Fixtures & Equip	-	-	-	14,839	-	-	-	14,839	-	14,839
<b>Total – Costs</b>	-	-	<b>21,755</b>	<b>249,245</b>	-	-	-	<b>271,000</b>	-	<b>271,000</b>
General Obligation Bonds	-	-	21,755	249,245	-	-	-	271,000	-	271,000
<b>Total – Funding Sources</b>	-	-	<b>21,755</b>	<b>249,245</b>	-	-	-	<b>271,000</b>	-	<b>271,000</b>

Operating Impact (\$ in 1000s)	FY 2023	FY 2024	FY 2025	FY 2026	FY 2027	FY 2028	Total
Debt Service	-	-	2,756	9,445	17,226	25,618	55,045
<b>Total – Impact</b>	-	-	<b>2,756</b>	<b>9,445</b>	<b>17,226</b>	<b>25,618</b>	<b>55,045</b>