

2 OVERALL COMMUNITY EVALUATION

2.1 Existing Characteristics

Waterford is a small community with 154 lots that are either completely within or partially within the study boundary. The 145 lots that are completely within the study boundary range in size from approximately 0.02 acres to approximately 19 acres. A wastewater treatment plant (WWTP), owned and operated by Loudoun Water, is located at the Northwest corner of the study boundary, and most of the community is served by public sewer, which was installed in the mid- to late- 1970's. It should be noted that public sewer was installed to address a public health need, as wells showed bacterial contamination resulting from private on-site disposal systems. The sewer infrastructure is located under the roads of the community. Waterford is located by the South Fork of Catoclin Creek, as shown in **Figure 2.1**.

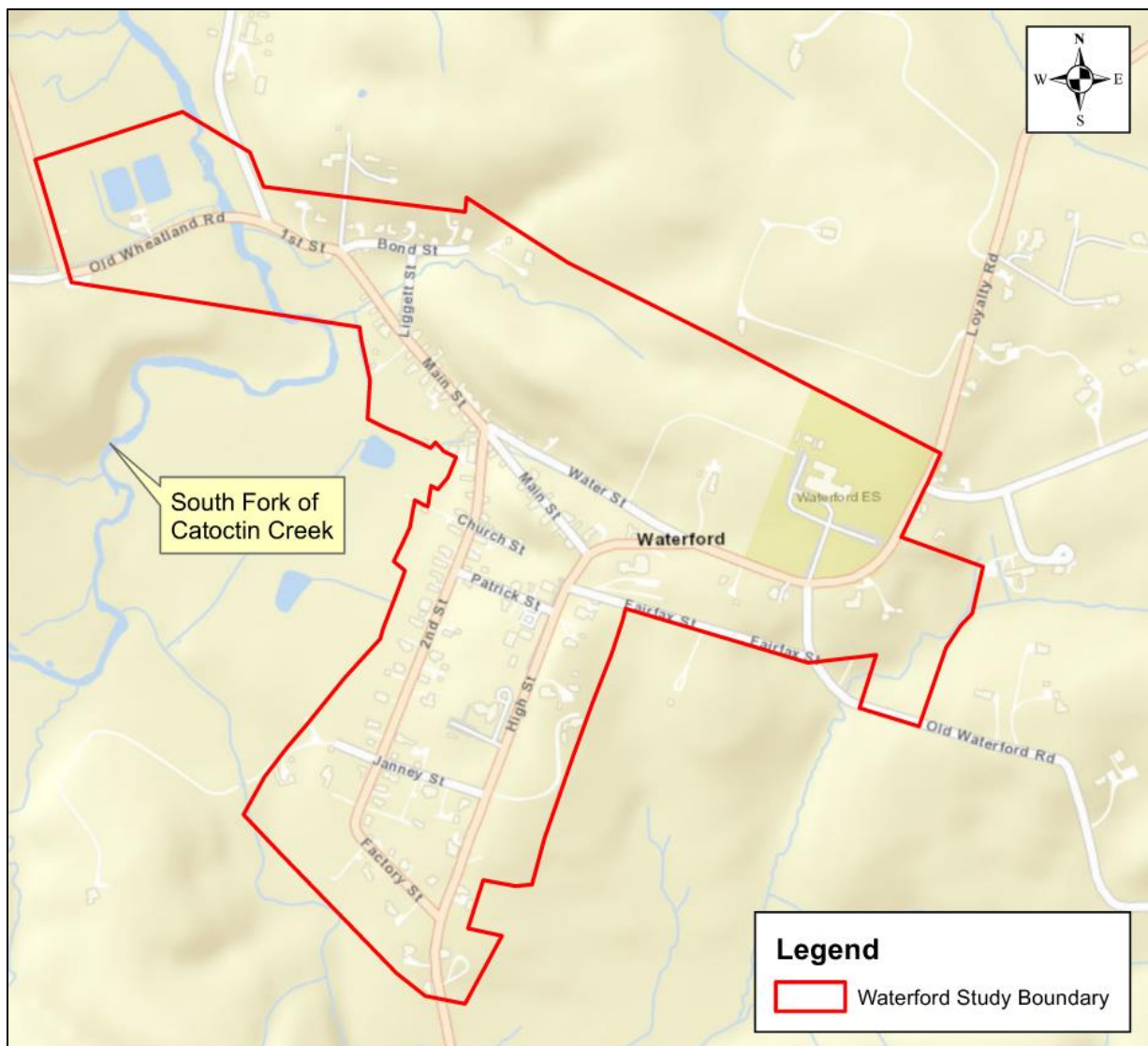


Figure 2.1 – Waterford Village by Catoclin Creek