



# Capital Improvement Program Middle Schools

## Contents

Middle Schools Summary	11-7
Middle School (MS 14) Dulles North	11-8
Middle School (MS 19) Undesignated Location	11-9



## Middle Schools

Capital Improvement Program											
Middle Schools											
Capital (\$ in 1000s)	Prior Years	FY 2021	FY 2022	FY 2023	FY 2024	FY 2025	FY 2026	6 Year Total	Future FYs	Project Total	
<b>Projects</b>											
Middle School (MS-14) Dulles North	-	8,460	80,310	-	-	-	-	88,770	-	88,770	
Middle School (MS-19) Undesignated Location	-	-	-	-	-	-	13,585	13,585	99,620	113,205	
Middle School (MS-15) Undesignated Location	-	-	-	-	-	-	-	-	113,205	113,205	
<b>Total Cost</b>	-	<b>8,460</b>	<b>80,310</b>	-	-	-	<b>13,585</b>	<b>102,355</b>	<b>212,825</b>	<b>315,180</b>	
<b>Funding Source</b>											
General Obligation Bonds	-	8,460	80,310	-	-	-	13,585	102,355	212,825	315,180	
<b>Total Financing</b>	-	<b>8,460</b>	<b>80,310</b>	-	-	-	<b>13,585</b>	<b>102,355</b>	<b>212,825</b>	<b>315,180</b>	



**Middle Schools**

**Middle School (MS- 14) Dulles North**

**Details:**

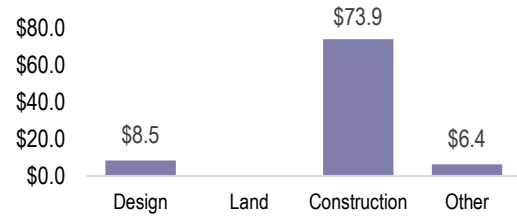
**Project Number:** n/a  
**Election District:** n/a  
**Square Feet:** 184,593  
**LCPS Planning District:** Dulles North  
**Estimated Completion Year:** FY 2025  
**Referendum:** November 2019

**Background:**

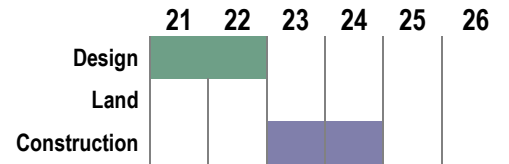
The middle school will be built using a two-story middle school design. The estimated 184,593-square-foot building will serve students in grades six through eight. With an anticipated program capacity of 1,445, the middle school design will utilize the 'house' concept for each grade and will include classrooms, a media center, cafeteria, auditorium, gymnasium, auxiliary gymnasium, and unlighted outdoor physical education fields.

A site will need to be acquired for MS-14 in the Dulles North Planning District.

**Phase Costs in Millions**



**Project Phase Timeline by FY**



Capital (\$ in 1000s)	Prior Years	FY 2021	FY 2022	FY 2023	FY 2024	FY 2025	FY 2026	6 Year Total	Future FYs	Project Total
Professional Services	-	8,460	-	-	-	-	-	8,460	-	8,460
Construction	-	-	73,910	-	-	-	-	73,910	-	73,910
Furniture, Fixtures & Equip	-	-	6,400	-	-	-	-	6,400	-	6,400
<b>Total Cost</b>	-	<b>8,460</b>	<b>80,310</b>	-	-	-	-	<b>88,770</b>	-	<b>88,770</b>
General Obligation Bonds	-	8,460	80,310	-	-	-	-	88,770	-	88,770
<b>Total Financing</b>	-	<b>8,460</b>	<b>80,310</b>	-	-	-	-	<b>88,770</b>	-	<b>88,770</b>

Operating Impact (\$ in 1000s)	FY 2021	FY 2022	FY 2023	FY 2024	FY 2025	FY 2026	Total
Debt Service	-	442	3,220	8,033	9,071	8,825	29,590
<b>Total Impact</b>	-	<b>442</b>	<b>3,220</b>	<b>8,033</b>	<b>9,071</b>	<b>8,825</b>	<b>29,590</b>



**Middle Schools**

**Middle School (MS- 19) Undesignated Location**

**Details:**

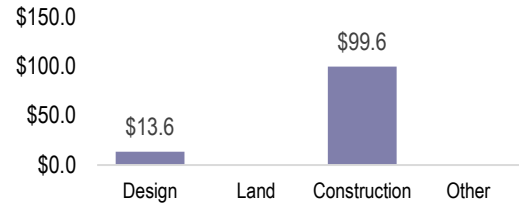
**Project Number:** n/a  
**Election District:** n/a  
**Square Feet:** 184,593  
**LCPS Planning District:** n/a  
**Estimated Opening Year:** FY 2030  
**Referendum:** November 2024

**Background:**

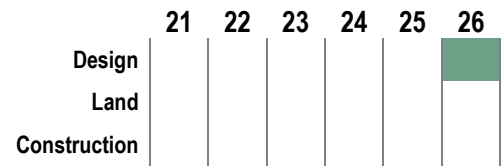
The middle school will be built using a two-story middle school design. The estimated 184,593-square-foot building will serve students in grades six through eight. With an anticipated program capacity of 1,445, the middle school design will use the 'house' concept for each grade and will include classrooms, a media center, cafeteria, auditorium, gymnasium, auxiliary gymnasium, and unlighted outdoor physical education fields.

A site will need to be acquired for MS-19.

**Phase Costs in Millions**



**Project Phase Timeline by FY**



Capital (\$ in 1000s)	Prior Years	FY 2021	FY 2022	FY 2023	FY 2024	FY 2025	FY 2026	6 Year Total	Future FYs	Project Total
Professional Services	-	-	-	-	-	-	13,585	13,585	-	13,585
Construction	-	-	-	-	-	-	-	-	99,620	99,620
<b>Total Cost</b>	-	-	-	-	-	-	<b>13,585</b>	<b>13,585</b>	<b>99,620</b>	<b>113,205</b>
General Obligation Bonds	-	-	-	-	-	-	13,585	13,585	99,620	113,205
<b>Total Financing</b>	-	-	-	-	-	-	<b>13,585</b>	<b>13,585</b>	<b>99,620</b>	<b>113,205</b>

Operating Impact (\$ in 1000s)	FY 2021	FY 2022	FY 2023	FY 2024	FY 2025	FY 2026	Total
Debt Service	-	-	-	-	-	5,660	5,660
<b>Total Impact</b>	-	-	-	-	-	<b>5,660</b>	<b>5,660</b>